



IN THIS ISSUE:

- GIS News
- User Group Summary
- Recent GIS Updates

GIS Day 2016

November 16th was GIS Day and Advanced Network & Computer Services partnered with the City of Evansville and Vanderburgh County to host a Maps & Apps showcase to highlight the City and County’s continuing strides and successes in GIS.

Several City and County departments showcased their GIS prowess by demonstrating ArcGIS Online, Drones, web mapping applications, and paper maps.

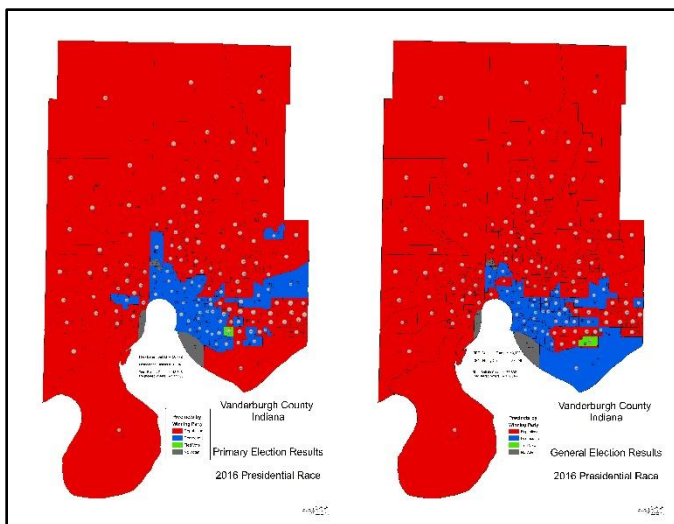
A BIG Thank you to everyone who donated their time, talent and maps to make this year’s GIS Day event spectacular!

Ryan Key won for best display, showcasing his drone and 3D applications.



Presidential Results

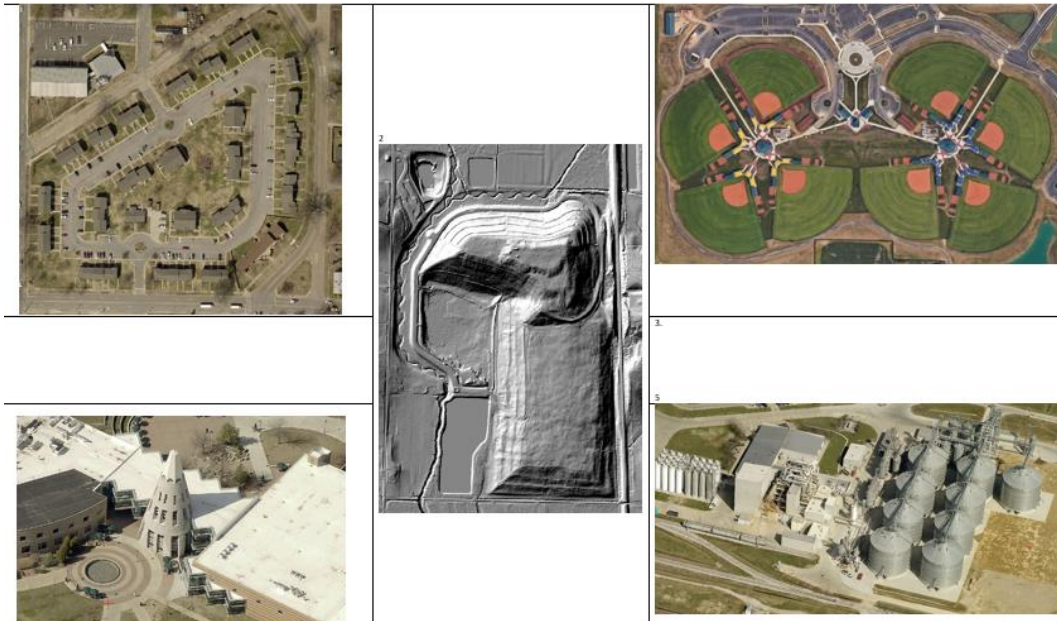
Here are the Primary and General Election Presidential race results. The map shows precincts symbolized by the winning party, Red for Republicans and blue for Democrats. The map shows a dominate win for the Republican party with claiming 97 precincts versus the 34 of the democratic party. You can zoom into the map to see a pie chart showing the number of votes for those political parties. Note The Independent party did not gain enough votes to be mapped for this display.





Did you guess these locations correctly?

Can you guess these locations?

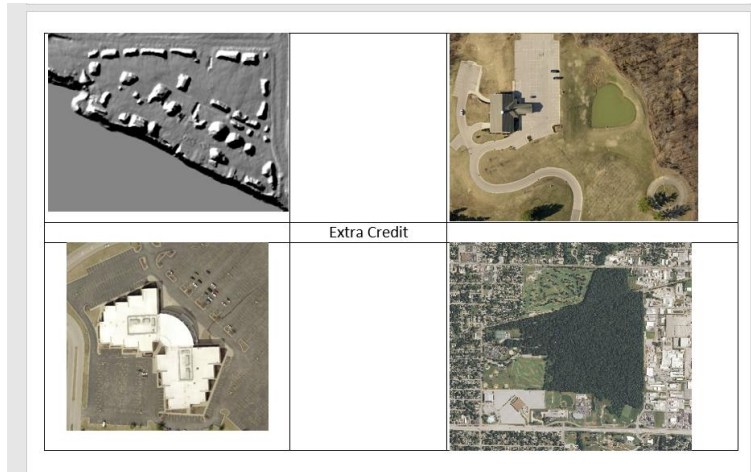


1. Lincoln Estates, the street is Jeanette Benton Drive. The African American Museum is located there as well. It sits right next to Canal Street, which is where the Wabash Erie Canal once ran.
2. The landfill using the DEM hillshade to highlight the elevation
3. The new Deaconess Sports Park, located right next to Goebel Soccer Complex
4. The Cone, its located in the commons area at USI.
5. Azteca Milling Company located at Baseline and US Highway 41

**Erin Schriefer of EMPO
knew all those locations
and won a bag of swag!**



How about these locations, did you know these?



1. Mulzer Crushed Stone, along the Ohio River, using the DEM hillshade.
2. Sunset Funeral Home and Memorial Park Cemetery, off of St George Rd
3. AMC Stadium 16 movie theater, on Pearl Dr.
4. The Wesselman Woods area, you can see McDonald Golf Course, and the old Roberts Stadium and parking lot.

Beth Purtzer and Jim Sands of DMD joined forces to name all four locations



Matt Schriefer of EMPO also knew his locations



All Winners were drawn from all correct entries.

Next GIS User Group Meeting is scheduled for Dec 21, 2016 @ 9:30 in room 318



Recent GIS Layer Updates

| Layer | Changes | Submitted By |
|-------|---|--------------|
| | Most everyone should have ArcGIS Desktop 10.4.1 installed If not please contact Laura if you still need updated. | |

GIS Updates

| Project | Changes | Submitted By |
|----------------|--|--------------|
| Windows 10 | If you have the new Windows 10, you will need ArcGIS version 10.3.1 or later | |
| ArcGIS desktop | ArcGIS 10.5 is in pre-release. Do not install on production computers at this time. Please set up your testing environment for the new release | |

Have a question about any GIS layer or project update? Have a suggestion or comment? Simply just hold CTRL + click on the “Submitted By” person or department to send an email.

Have something you want to share with the Enterprise?

Send it to Laura Gillespie (lgillespie@advncs.com)